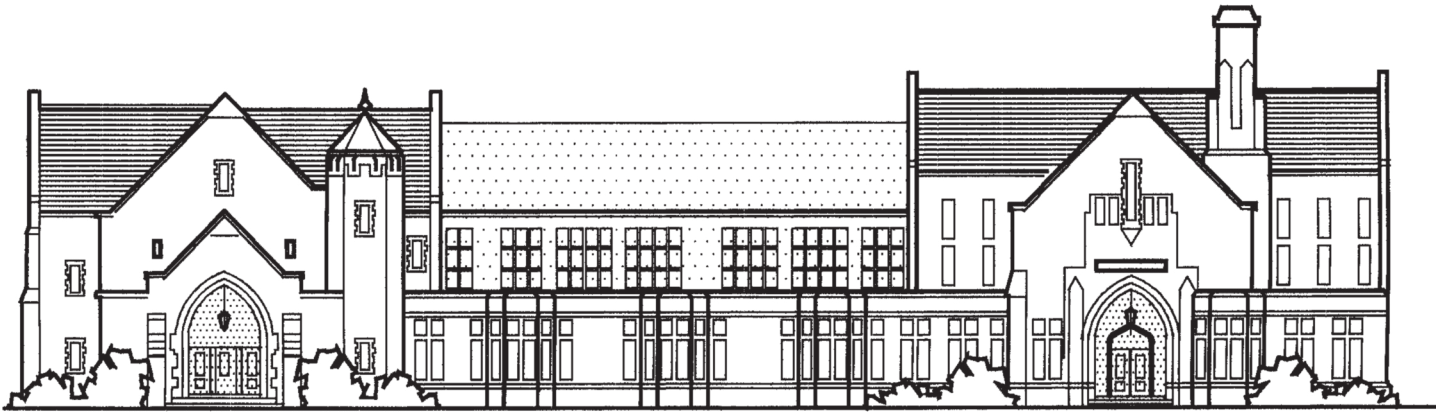


RYE HIGH SCHOOL PROFILE

2016 - 2017



RYE HIGH SCHOOL

ONE PARSONS STREET, RYE, NEW YORK 10580

914-967-6100, ext. 1940, ext. 1941 • FAX 914-967-1872 • CEEB #334970

MISSION STATEMENT

The mission of the Rye City School District, in partnership with the community, is to ensure that every student is capable of becoming a life-long learner who can thrive in a global environment as a self-reliant and socially responsible citizen. To realize this mission, our schools will provide an engaging, challenging, personalized program that supports each individual's talents and potential, in a fiscally responsible manner.

ADMINISTRATION

Dr. Brian Monahan, *Interim Supt. of Schools*

Patricia B. Taylor, *Principal*

Suzanne Short, *Assistant Principal*

Robert Zegarelli, *Assistant Principal*

THE HIGH SCHOOL

Public high school; a teaching staff of 82; grades 9-12; approximately 1,000 students; accreditation: New York State Department of Education.

GUIDANCE DEPARTMENT

Director of Guidance:

James G. O'Hara, ohara.james@ryeschools.org

Counselors:

Jaime Condon, condon.jaime@ryeschools.org

Susan Dickson, dickson.susan@ryeschools.org

Barbara Finder, finder.barbara@ryeschools.org

Jennifer Magner, magner.jennifer@ryeschools.org

Garrett Renner, renner.garrett@ryeschools.org

THE COMMUNITY

Rye is a small city school district located 26 miles northeast of New York City in Westchester County, with a population of 15,000. Excellence in education is a top priority for the residents of the City of Rye. Expenditure per pupil is presently \$23,209.

NATIONAL RECOGNITION STATEMENT

Rye High School has been recognized for its academic strengths by placing in the top 100 high schools in the National Rankings conducted by US News and World Report and Newsweek Magazine.

POST SECONDARY EDUCATION CLASS OF 2016

100% enter universities and colleges

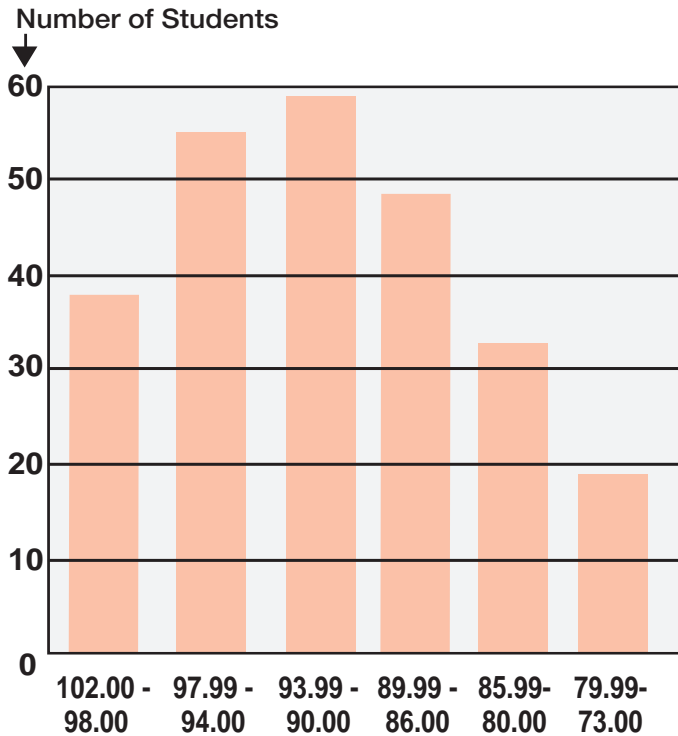
- 96% attend four-year colleges

- 2% attend two-year colleges

<2% other plans

GRADING SYSTEM

CLASS OF 2017



Rye High School does not rank. Of the 264 students enrolled in the Class of 2017, 252 have been included in grade distributions. The remaining 12 students have not been included because they attended foreign schools or schools which do not have a compatible grading system with Rye High School.

GRADING

1. A cumulative grade-point average (GPA) for each student is calculated using all graded, credit-bearing courses based on six semesters of study.
2. Honors and AP courses are weighted. An additional 5 points are added to the final average of each course when computing the GPA. The weighted GPA is recorded on the bottom of the transcript.
3. Core academic courses at Rye High School are taught on several levels of difficulty. Courses are designated H to denote honors, R to denote Regents preparation and AP for Advanced Placement courses.
4. When courses and Regents exams are retaken, the higher grade will be calculated for the student's GPA.
5. Courses taken outside the high school structure (summer enrichment programs, university programs, study abroad) are not calculated in the grading.
6. Physical education and health are included in a student's average.

CURRICULUM

Rye High School participates in the College Board Advanced Placement program. Offerings include two courses in English, seven courses in

History, five courses in the Sciences, three in Foreign Language, three in Math and two in the Arts.

SPECIAL INITIATIVES

WRITING MENTOR PROGRAM

The Writing Mentor Program is an opportunity for students to work with trained faculty Writing Mentors during the school year. These personalized sessions help each student to hone their writing performance on various assignments. Those who voluntarily meet with their teacher/mentor at least ten times during the school year will earn the Writing Distinction notation on their transcript.

SCHOOL/COMMUNITY SERVICE

Rye High School recognizes the value of School/Community Service. Students are required to complete 60 hours by graduation. They receive 1/2 credit and it is recorded on the student's transcript after verification.

Total Service Hours: as of 7/1/16

Class of 2016	=	36,986
Class of 2017	=	29,531
Class of 2018	=	18,193
Class of 2019	=	5,476

ADVANCED PLACEMENT RESULTS

MAY 2016

Advanced Placement Tests	No. Tested	Scored 3 or above	Advanced Placement Tests	No. Tested	Scored 3 or above
Art 2-D Design*	39	87%	German Lang & Culture	1	100%
Art History *	23	78%	Gov't & Politics US*	56	57%
Biology*	25	92%	Italian Language	1	100%
Calculus AB*	49	87%	Japanese Language	1	100%
Calculus BC*	30	96%	Physics 1*	30	66%
Chemistry*	35	85%	Psychology*	127	74%
Economics-Macro*	72	65%	Spanish Language*	41	92%
English Lang & Comp*	61	88%	Statistics*	7	71%
English Lit/Composition*	83	91%	Studio Art/Drawing *	10	70%
Environmental Science*	34	85%	US History*	165	71%
European History*	32	68%	World History*	142	85%
French Language*	7	85%			

Students taking AP courses are required to take the AP exam.

* CollegeBoard Authorized Advanced Placement course.

Total Pupils Tested: 581

Advanced Placement Results 2011-2016

			Year	Total Number of AP Candidates	Total Number of Exams Taken	% of Grades 3 or Higher
Scores of 5:	276	= 25%	2011	453	916	85%
Scores of 4:	329	= 30%	2012	458	991	87%
Scores of 3:	271	= 25%	2013	467	920	86%
Scores below 3:	228	= 20%	2014	509	1,013	81%
			2015	554	1,083	80%
Total Tests Administered: 1,104			2016	581	1,104	80%

SAT SCORES - 2016 (204 students)

	Critical Reading	Math	Writing
Rye High School Mean:	592	614	618
New York State Mean:	489	508	477

SAT Subject Tests - Rye High School Mean Scores

Biology E	678	Literature	650	U.S. History	665
Biology M	711	Math Level I	650	World History	628
Chemistry	739	Math Level II	701		

ACT SCORES - 2016 (85 students)

	English	Math	Reading	Science	Composite
Rye High School Mean:	26.9	26.7	26.8	25.9	26.7
New York State Mean:	23.2	23.9	24.4	23.7	23.9

2016 National Merit Competition: 4 Finalists, 26 Commended Students

REPRESENTATIVE COLLEGES OF MATRICULATION

RYE HIGH SCHOOL CLASSES OF 2015 & 2016

American University	John Jay College	The George Washington University
Amherst College	Johns Hopkins University	The Ohio State University
Arizona State University	Johnson & Wales University	The University of Alabama
Bates College	Lafayette College	The University of Tampa
Bentley University	Lehigh University	Trinity College
Berkeley College of White Plains	Loyola University Maryland	Tufts University
Berklee College of Music	Manhattan College	Tulane University
Binghamton University	Manhattanville College	Union College
Bloomsburg Univ of Pennsylvania	Marietta College	United States Military Academy
Boston College	Marist College	United States Naval Academy
Boston University	McGill University	University at Buffalo
Brigham Young University	Mercy College	University of California, Berkeley
Brown University	Miami University, Oxford	University of California, Los Angeles
Bucknell University	Middlebury College	University of California, San Diego
Butler University	Mitchell College	University of California, Santa Barbara
Carleton College	Muhlenberg College	University of Colorado at Boulder
Clemson University	NYC College of Technology	University of Connecticut
Colby College	New York Institute of Technology	University of Delaware
Colgate University	New York University	University of Florida
College of Charleston	Northeastern University	University of Maryland
College of the Holy Cross	Northwestern University	University of Miami
Colorado College	Pennsylvania State University	University of Michigan
Colorado State University	Pepperdine University	University of Mississippi
Columbia University	Princeton University	University of New Hampshire
Concordia College - New York	Providence College	University of Notre Dame
Cornell University	Purchase College	University of Pennsylvania
Curry College	Purdue University	University of Pittsburgh
Dartmouth College	Queen's University	University of Rhode Island
Davenport University	Quinnipiac University	University of Richmond
Davidson College	Rensselaer Polytechnic Institute	University of Rochester
Denison University	Rhode Island School of Design	University of South Carolina
Dickinson College	Rice University	University of Southern California
Duke University	Rochester Institute of Technology	University of St Andrews
Eastern Michigan University	Sacred Heart University	University of Sydney
Eckerd College	Saint Joseph's University	University of Utah
Elon University	Saint Louis University	University of Vermont
Embry-Riddle Aeronautical University	Salve Regina University	University of Virginia
Emory University	Santa Clara University	University of Washington
Emory University - Oxford College	Sarah Lawrence College	University of Wisconsin, Madison
Fairfield University	Savannah College of Art and Design	Utrecht University College
Fashion Institute of Technology	School of the Art Inst. of Chicago	Vanderbilt University
Florida Atlantic University	Schreiner University	Villanova University
Fordham University	Skidmore College	Wake Forest University
Franklin and Marshall College	Southern Methodist University	Washington and Lee University
Georgetown University	SUNY Albany	Washington University in St. Louis
Georgia Institute of Technology	SUNY New Paltz	Wellesley College
Gettysburg College	Stony Brook University	Wesleyan University
Harvard University	SUNY College at Geneseo	Westchester Community College
Haverford College	SUNY College at Oneonta	Western New England University
High Point University	SUNY College at Potsdam	Wheaton College IL
Hobart and William Smith Colleges	SUNY Polytechnic Institute	Widener University
Hunter College of the CUNY	Susquehanna University	Worcester Polytechnic Institute
Indiana University at Bloomington	Syracuse University	Yale University
Iona College	Texas Christian University	Various Foreign Universities
Ithaca College	The College of Saint Rose	
James Madison University	The Culinary Institute of America	